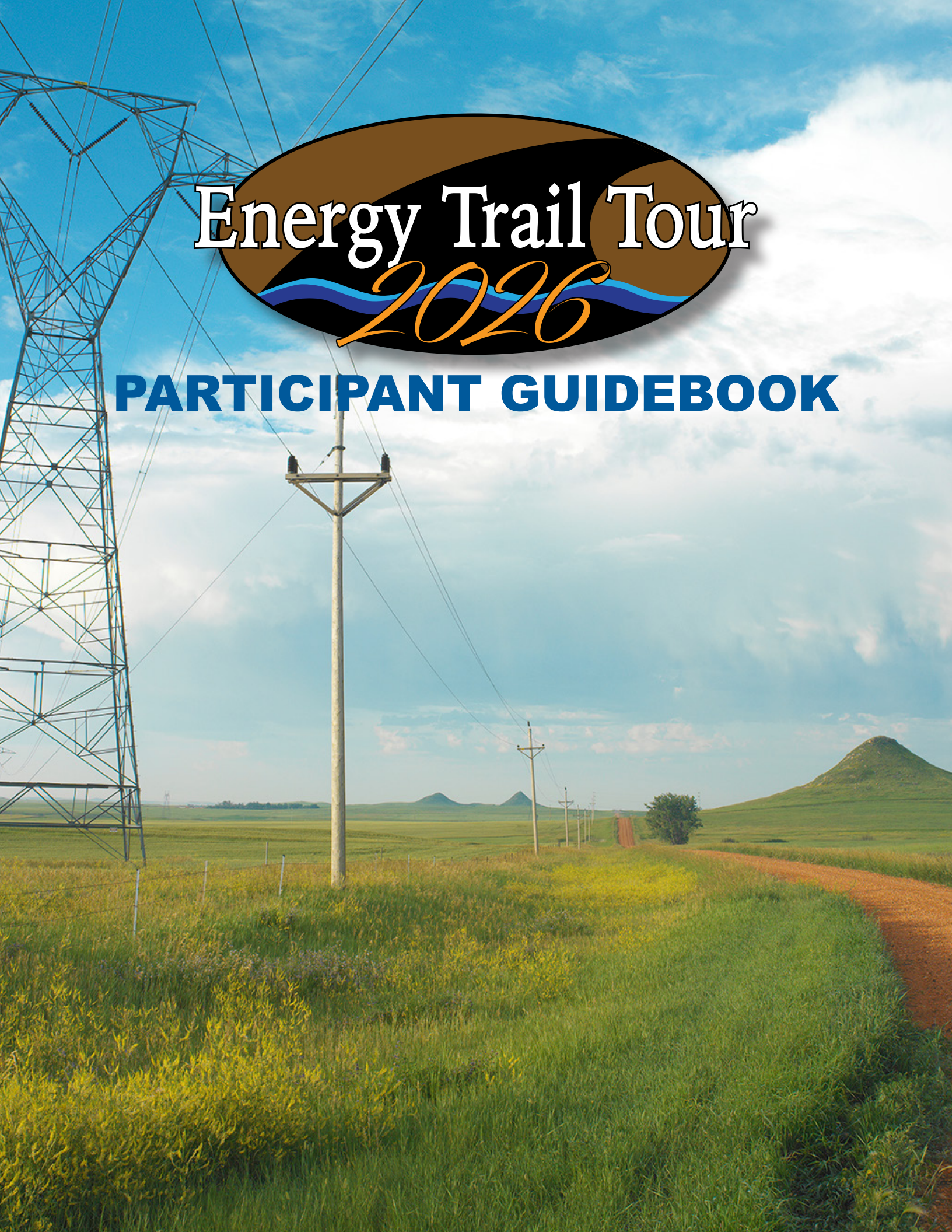


The logo is an oval shape with a brown background. The text "Energy Trail Tour" is written in a white, serif font with a black outline. Below this, the year "2026" is written in a large, orange, cursive font. A blue and white wavy line, resembling a river or a trail, runs horizontally through the middle of the oval, behind the year.

Energy Trail Tour 2026

PARTICIPANT GUIDEBOOK



TOUCHSTONE ENERGY® COOPERATIVES



Touchstone Energy® Cooperatives

The power of human connections®

As a Touchstone Energy Cooperative®, your cooperative belongs to an alliance of local, consumer-owned electric cooperatives providing high standards of service to customers, both large and small.

Touchstone Energy cooperatives use the resources of a national network, and take advantage of economies of scale to enhance their unique relationships with their local member-owners.

Touchstone Energy cooperatives operate according to the core values of integrity, accountability, innovation, and commitment to community. More than 750 cooperatives in 46 states belong to this alliance.

What is Touchstone Energy?

Touchstone Energy is the brand identity program for co-ops across the nation designed to:

- help member-owners understand the value of their cooperative; and
- help distribution co-ops provide programs and services responsive to members' needs.

Touchstone Energy is more than advertising. It is a promise to the members that cooperatives will provide reliable energy services through superior customer service while being committed to the community that they serve. Touchstone Energy is a tool for building unity within the co-op family.

Why do co-ops need a brand?

In 1998, 46 co-ops across the nation, together, developed the branding program because of a changing industry and demographics among the members. Research determined the need to:

- Clearly communicate the value of co-ops
- Effectively share resources among co-ops
- Create new solutions
- Efficiently use new technologies

What do core values mean?

- Integrity means being honest, following through, and living up to the Touchstone Energy promise.
- Accountability means being responsible for delivering superior service, and doing what we say we will do on a daily basis.
- Innovation means finding new solutions for old, or new challenges.
- Commitment to Community means understanding the needs of our community and its development. It's about doing what's good for our neighborhood and our cooperative.

Who owns Touchstone Energy?

Touchstone Energy cooperatives own Touchstone Energy and, together, are responsible for building the brand locally, and nationally. Cooperative employees, and directors who serve on a board of directors, and advisory committees govern the brand by creating policy, and strategy.

To learn more, check out

www.touchstoneenergy.com



NIPCO ELECTRIC COOPERATIVES

Members of Northwest Iowa Power Cooperative include six rural electric distribution cooperatives and one municipal electric cooperative known as WIMECA (Western Iowa Municipal Electric Cooperative Association). Electric cooperatives are private, not-for-profit businesses owned and governed by their consumer-members. Any revenues over and above the actual cost of delivering power are shared back with the people we serve on the basis of business done with the Cooperative. NIPCO members belong to the communities they serve, and power the farms, homes, and industries in western Iowa. NIPCO members include:



Harrison County Rural Electric Cooperative

Operating in Woodbine, Iowa, they serve over 2,400 consumer-members in Harrison, Shelby, Crawford, Pottawattamie, and Monona counties.



Iowa Lakes Electric Cooperative

Headquartered in Estherville, Iowa, they serve over 13,000 member-owners in the northwest Iowa counties of Buena Vista, Cherokee, Clay, Dickinson, Emmet, Kossuth, Palo Alto, and Pocahontas.



Nishnabotna Valley Rural Electric Cooperative

This co-op serves over 2,500 member-owners in southwest Iowa and has an office located in Harlan.



North West Rural Electric Cooperative

Headquartered in Orange City, Iowa, North West REC serves more than 7,300 member-owners across Sioux, Ida, O'Brien, and Plymouth counties in northwest Iowa.



Western Iowa Municipal Electric Cooperative Association

Serving over 4,600 meters in western Iowa, WIMECA is comprised of the cities of Anthon, Aurelia, Hinton, Manning, Mapleton, and Onawa.



Western Iowa Power Cooperative

This co-op serves approximately 3,400 consumer-members living in nine Iowa counties in west central Iowa. WIPCO is headquartered in Denison, Iowa.



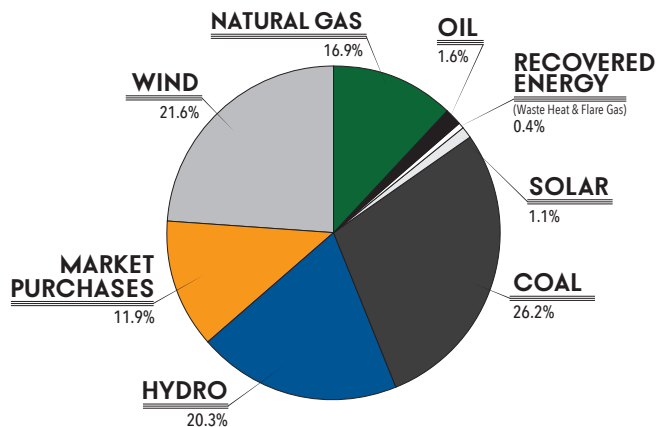
Woodbury County Rural Electric Cooperative

Operating out of Merville, Iowa, this co-op serves over 2,400 consumer-members living in the Iowa county of Woodbury.

NORTHWEST IOWA POWER COOPERATIVE



2025 NIPCO GENERATION PORTFOLIO



Northwest Iowa Power Cooperative (NIPCO) is a generation and transmission electric cooperative supplying wholesale electric power to seven member distribution cooperatives covering 6,500 square miles in western Iowa. These distribution cooperatives supply retail power to over 34,000 consumer-members. NIPCO serves its membership with over 900 miles of 69kV transmission line and 85 distribution substations. Formed by 13 western Iowa distribution cooperatives and incorporated in 1949, NIPCO is headquartered in Le Mars, Iowa.

NIPCO's primary purpose was to construct and maintain a power delivery system and secure all future power supply needs for its member cooperatives. NIPCO's first transmission pole was set in 1953 and the system was energized on April 5, 1956.

When incorporated in 1949, NIPCO received all of its power requirements from hydro-power supplied by the Missouri River dam system. In the 1960's, load growth studies indicated that an additional

generation resource was needed to meet the needs of electric consumers being served in NIPCO's service territory. Cooperative leaders from eight states worked together to form Basin Electric Power Cooperative, headquartered in Bismarck, ND. Basin Electric built generation plants comprised primarily of coal, oil, and natural gas.

Today, Missouri River hydro-power purchased from Western Area Power Administration (WAPA) supplies 20 percent of the energy needs for western Iowa's electric cooperatives, with the remaining portion provided through Basin Electric resources.

For more information, check out our website at www.nipco.coop



Follow us on Facebook!
@Northwest Iowa Power Cooperative

NIPCO MEMBER SYSTEMS & DIRECTORS



A Touchstone Energy® Cooperative 



Brenda Lundergard, President
Harrison County REC



Ronald Steinhoff, Vice President
Woodbury County REC



Bryan Greve
Nishnabotna Valley REC



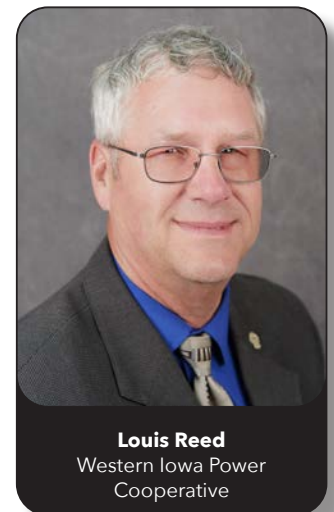
Thomas Wagner, Treasurer
Basin Electric Representative
North West REC



Trent Will, Secretary
Iowa Lakes Electric Cooperative



James Else
Western Iowa Municipal
Electric Cooperative Association*



Louis Reed
Western Iowa Power
Cooperative

*Cities of Anthon, Aurelia, Hinton, Manning, Mapleton, Onawa

CORN BELT POWER COOPERATIVE



Corn Belt Power Cooperative owns and operates more than 1,700 miles of high-voltage transmission line. The cooperative owns and maintains 160 substations and switching stations.

More than 30 microwave towers provide instant communication to operate radio-controlled switches. Redundant rings in the microwave communications system provide high reliability to member-cooperatives. Where feasible, Corn Belt Power is installing optical ground wire (fiber) to enhance existing communications services.

The System Control Center is staffed 24 hours a day to monitor generation and transmission. Service crews are located at Humboldt headquarters, Hampton Service Center and Emmetsburg Service Center.

Corn Belt Power has one wholly owned power plant that runs on natural gas or fuel oil. It also co-owns a natural gas combustion turbine generator. Corn Belt Power jointly owns three coal-fired power plants.

For more information, check out our website at www.cbpower.coop

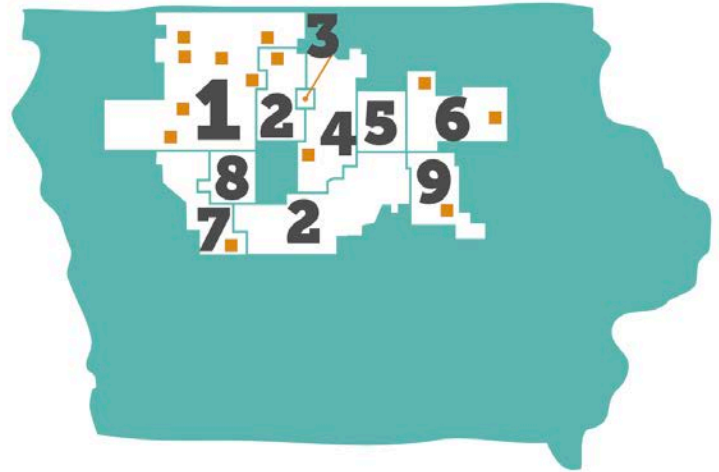


CORN BELT MEMBER SYSTEMS & DIRECTORS



Dan Onken, President
Raccoon Valley Electric
Cooperative

1. Iowa Lakes Electric Cooperative
2. Midland Power Cooperative
3. Boone Valley Electric Cooperative
4. Prairie Energy Cooperative
5. Franklin REC
6. Butler County REC
7. Raccoon Valley Electric Cooperative
8. Calhoun County Electric Cooperative Association
9. Grundy County REC
- North Iowa Municipal Electric Cooperative Association (NIMECA)
(Serving municipal utilities of Algona, Alta, Bancroft, Coon Rapids, Graettinger, Grundy Center, Laurens, Milford, New Hampton, Spencer, Sumner, Webster City and West Bend)



Steve Boedecker, Vice President
Calhoun County ECA



Jerry Beck, Secretary
Basin Electric Representative
Iowa Lakes Electric Cooperative



Rick Thompson, Treasurer
Midland Power Cooperative



Gary Poppe, Assistant Secretary/Treasurer
Butler County REC



Larry Rohach
Grundy County REC



Dale Schaefer
Franklin REC



Brad Honold
North Iowa Municipal Electric
Cooperative Association*



Ted Hall
Prairie Energy Cooperative

*Cities of Algona, Alta, Bancroft, Coon Rapids, Graettinger, Grundy Center, Laurens, Milford, New Hampton, Spencer, Sumner, Webster City, West Bend

CORN BELT POWER ELECTRIC COOPERATIVES

Corn Belt Power Cooperative, headquartered in Humboldt, Iowa, is a generation & transmission (G&T) electric cooperative owned by its member systems. As a Touchstone Energy Cooperative, Corn Belt Power is committed to the values of accountability, integrity, innovation and community involvement.



Iowa Lakes Electric Cooperative

Iowa Lakes Electric Cooperative provides power to 13,051 meters serving residential, commercial and industrial members in Buena Vista, Cherokee, Clay, Dickinson, Emmet, Kossuth, Palo Alto, Pocahontas, Ida, O'Brien, Osceola and Plymouth counties.



Midland Power Cooperative

Midland Power Cooperative provides power to 12,020 meters serving residential, commercial and industrial members in Boone, Calhoun, Dallas, Franklin, Greene, Grundy, Guthrie, Hamilton, Hardin, Humboldt, Kossuth, Marshall, Pocahontas, Polk, Story, Webster and Wright counties.



Prairie Energy Cooperative

Prairie Energy Cooperative provides power to 5,071 meters serving residential, commercial and industrial members in Wright, Webster, Hamilton, Humboldt, Hancock, Franklin, Hardin, Worth, Winnebago, Cerro Gordo, and Kossuth counties.



Franklin Rural Electric Cooperative

Franklin REC provides power to 1,807 meters serving residential, commercial and industrial members in Butler, Cerro Gordo, Floyd, Franklin, Hardin, and Wright counties.



Butler County Rural Electric Cooperative

Butler County REC provides power to 6,457 meters serving residential, commercial and industrial members in Butler, Floyd, Chickasaw and Bremer counties.



Raccoon Valley Electric Cooperative

Raccoon Valley Electric Cooperative provides power to 2,758 meters serving residential, commercial and industrial members in Carroll, Sac, Audubon, Buena Vista, Calhoun, Crawford, Greene, Guthrie, and Ida counties.



Calhoun County Electric Cooperative Association

Calhoun County Electric Cooperative Association provides power to 1,854 meters serving residential, commercial and industrial members in Calhoun, Sac, Webster, Pocahontas and Greene counties.



Grundy County Rural Electric Cooperative

Grundy County REC provides power to 2,314 meters serving residential, commercial and industrial members in Grundy, Black Hawk, Butler, Hardin, Marshall and Tama counties.



North Iowa Municipal Electric Cooperative Association

NIMECA is the power supplier to 13 municipal utilities in northern Iowa: Algona Municipal Utilities; Alta Municipal Power Plant; Bancroft Municipal Utilities; Coon Rapids Municipal Utilities; Graettinger Municipal Light Plant; Municipal Light & Power, Grundy Center; Municipal Light & Power Plant, Laurens; Milford Municipal Utilities; New Hampton Municipal Light Plant; Spencer Municipal Utilities; Sumner Municipal Light Plant; City of Webster City; West Bend Municipal Utilities.



Boone Valley Electric Cooperative

Boone Valley Electric Cooperative provides power to 128 meters serving residential members in Wright County.

BIG BEND DAM & POWERHOUSE



Big Bend Dam, located in Fort Thompson, South Dakota, stretches approximately two miles in length. It is about 50 feet wide at the top and expands to roughly 1,200 feet wide at its base. Designed and built by the U.S. Army Corps of Engineers, the dam was constructed using an estimated 17 million cubic yards of earth (enough to stretch nearly 5 miles long!). Big Bend Dam is one of six mainstem dams operating on the Missouri River, developed under the Pick-Sloan Missouri Basin Program in 1944 to manage water resources in the Missouri River Basin for flood control, navigation, irrigation, recreation, and energy generation.

Construction on Big Bend Dam began in 1959, and the project was fully completed in 1966, though electricity generation started earlier, in 1964. At the time, the total construction cost was \$107.7 million, which equates to roughly \$2 billion in today's dollars. The dam was designed not only to control flooding and manage water resources, but also to generate significant hydroelectric power for the region. The powerhouse at Big Bend Dam contains eight generating units. Each generator weighs

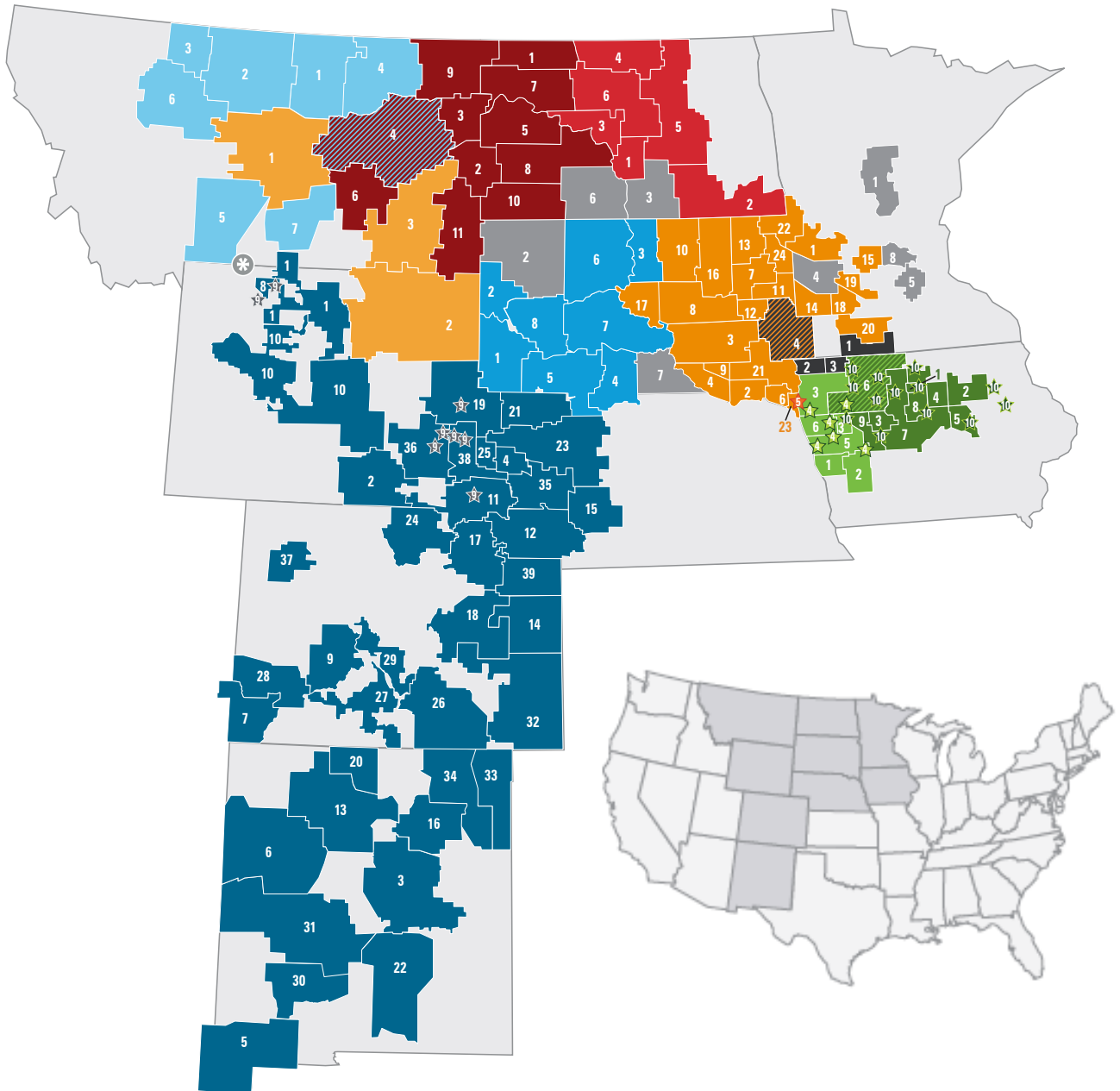
approximately 682 tons and produces 60 megawatts of electricity at 13,800 volts when operating. A single generating unit uses about 12,500 cubic feet of water per second—enough to fill an Olympic-size swimming pool in just over seven seconds. When all eight generators are running, total water flow through the dam can reach 100,000 cubic feet per second, underscoring the scale and power of the facility.

Together, these features make Big Bend Dam a critical piece of regional infrastructure and a compelling example of large-scale hydroelectric generation—helping provide power to communities across the region, including western Iowa.



PLEASE NOTE: Entry into the Big Bend facility requires a photo ID. There are some steps and extended standing throughout the 1½ hour tour duration. Photography or photographic equipment, cell phones and other mobile devices, are prohibited on the tour. An electromagnetic vibration does occur in the powerhouse and may pose an issue with some pacemakers. Please consult with your physician, prior to taking the tour, if you feel this is a concern.

BASIN ELECTRIC POWER COOPERATIVE MEMBERSHIP



UPDATED 05-2026

DISTRICT 1

East River Electric Power Cooperative
KERMIT PEARSON
Madison, South Dakota

- 1 Agralite Electric Cooperative
- 2 Bon Homme Yankton Electric Association
- 3 Central Electric Cooperative
- 4 Charles Mix Electric Association
- ★ 5 City of Elk Point, South Dakota
- 6 Clay-Union Electric Corporation
- 7 Codington-Clark Electric Cooperative
- 8 Dakota Energy Cooperative
- 9 Douglas Electric Cooperative
- 10 FEM Electric Association
- 11 H-D Electric Cooperative
- 12 Kingsbury Electric Cooperative
- 13 **Lake Region Electric Association**
- 14 Lyon-Lincoln Electric Cooperative
- 15 Meeker Energy
- 16 Northern Electric Cooperative
- 17 Oahe Electric Cooperative
- 18 Redwood Electric Cooperative
- 19 Renville-Sibley Cooperative Power Association
- ⊘ 20 Sioux Valley Energy
- 20 South Central Electric Association
- 21 Southeastern Electric Cooperative
- 22 Traverse Electric Cooperative
- 23 Union County Electric Cooperative
- 24 Whetstone Valley Electric Cooperative

DISTRICT 2

L & O Power Cooperative
DAVID MESCHKE
Rock Rapids, Iowa

- 1 **Federated Rural Electric Association**
- 2 Lyon Rural Electric Cooperative
- 3 Osceola Electric Cooperative
- 4 Sioux Valley Energy

DISTRICT 3

Central Power Electric Cooperative
TROY PRESSER
Minot, North Dakota

- 1 Capital Electric Cooperative
- 2 Dakota Valley Electric Cooperative
- 3 **McLean Electric Cooperative**
- 4 North Central Electric Cooperative
- 5 Northern Plains Electric Cooperative
- 6 Verendrye Electric Cooperative

DISTRICT 4

Northwest Iowa Power Cooperative
TOM WAGNER
Le Mars, Iowa

- 1 Harrison County Rural Electric Cooperative
- ⊘ 2 Iowa Lakes Electric Cooperative
- 2 Nishnabotna Valley Rural Electric Cooperative
- 3 **North West Rural Electric Cooperative**
- ★ 4 Western Iowa Municipal Electric Association (Anthon, Aurelia, Hinton, Manning, Mapleton, and Onawa)
- 5 Western Iowa Power Cooperative
- 6 Woodbury County Rural Electric Cooperative

DISTRICT 5

Tri-State Generation & Transmission Association
LEO BREKEL
Westminster, Colorado

- 1 Big Horn Rural Electric Company
- 2 Carbon Power & Light
- 3 Central New Mexico Electric Cooperative
- 4 Chimney Rock Public Power District
- 5 Columbus Electric Cooperative
- 6 Continental Divide Electric Cooperative
- 7 Empire Electric Association
- 8 Garland Light & Power Company
- 9 Gunnison County Electric Association
- 10 High Plains Power
- 11 High West Energy
- 12 **Highline Electric Association**
- 13 Jemez Mountains Electric Cooperative
- 14 K.C. Electric Association
- 15 Midwest Electric Cooperative Corporation
- 16 Mora-San Miguel Electric Cooperative
- 17 Morgan County Rural Electric Association
- 18 Mountain View Electric Association
- 19 Niobrara Electric Association
- 20 Northern Rio Arriba Electric Cooperative
- 21 Northwest Rural Public Power District
- 22 Otero County Electric Cooperative
- 23 Panhandle Rural Electric Membership Association
- 24 Poudre Valley Rural Electric Association
- 25 Roosevelt Public Power District
- 26 San Isabel Electric Association
- 27 San Luis Valley Rural Electric Cooperative
- 28 San Miguel Power Association
- 29 Sangre de Cristo Electric Association
- 30 Sierra Electric Cooperative
- 31 Socorro Electric Cooperative
- 32 Southeast Colorado Power Association
- 33 Southwestern Electric Cooperative
- 34 Springer Electric Cooperative
- 35 Wheat Belt Public Power District
- 36 Wheatland Rural Electric Association
- 37 White River Electric Association
- 38 Wyrulec Company
- 39 YW Electric Association

DISTRICT 6

Central Montana Electric Power Cooperative
DANIEL GLIKO, JR.
Great Falls, Montana

- 1 Big Flat Electric Cooperative
- 2 Hill County Electric Cooperative
- 3 **Marias River Electric Cooperative**
- ⊘ 4 McCone Electric Cooperative
- 4 NorVal Electric Cooperative
- 5 Park Electric Cooperative
- 6 Sun River Electric Cooperative
- 7 Yellowstone Valley Electric Cooperative

DISTRICT 7

Rushmore Electric Power Cooperative
DWIGHT ROSSOW
Rapid City, South Dakota

- 1 Black Hills Electric Cooperative
- 2 Butte Electric Cooperative
- 3 **Cam Wal Electric Cooperative**
- 4 Cherry-Todd Electric Cooperative
- 5 Lacreek Electric Association
- 6 Moreau-Grand Electric Cooperative
- 7 West Central Electric Cooperative
- 8 West River Electric Association

DISTRICT 8

Upper Missouri Power Cooperative
ANTHONY LARSON
Sidney, Montana

- 1 Burke-Divide Electric Cooperative
- 2 Goldenwest Electric Cooperative
- 3 Lower Yellowstone Rural Electric Association
- 4 McCone Electric Cooperative
- 5 McKenzie Electric Cooperative
- 6 Mid-Yellowstone Electric Cooperative
- 7 Mountrail-Williams Electric Cooperative
- 8 Roughrider Electric Cooperative
- 9 Sheridan Electric Cooperative
- 10 **Slope Electric Cooperative**
- 11 Southeast Electric Cooperative

DISTRICT 9

WAYNE PELTIER

- 1 Crow Wing Power
- 2 Grand Electric Cooperative
- 3 KEM Electric Cooperative
- 4 **Minnesota Valley Cooperative Light & Power Association**
- 5 Minnesota Valley Electric Cooperative
- 6 Mor-Gran-Sou Electric Cooperative
- 7 Rosebud Electric Cooperative
- 8 Wright-Hennepin Cooperative Electric Association
- ★ 9 Wyoming Municipal Power Agency (Cody, Fort Laramie, Guernsey, Lingle, Lusk, Pine Bluffs, Powell, and Wheatland)
- ⊘ 10 Flathead Electric Cooperative

DISTRICT 10

Members 1st Power Cooperative
PAUL BAKER
Sundance, Wyoming

- 1 Fergus Electric Cooperative
- 2 **Powder River Energy Corporation**
- 3 Tongue River Electric Cooperative

DISTRICT 11

Corn Belt Power Cooperative
JERRY BECK
Spencer, Iowa

- 1 Boone Valley Electric Cooperative
- 2 Butler County Rural Electric Cooperative
- 3 Calhoun County Electric Cooperative Association
- 4 Franklin Rural Electric Cooperative
- 5 Grundy County Rural Electric Cooperative
- 6 **Iowa Lakes Electric Cooperative**
- 7 Midland Power Cooperative
- 8 Prairie Energy Cooperative
- 9 Raccoon Valley Electric Cooperative
- ★ 10 North Iowa Municipal Electric Cooperative Association (Algona, Alta, Bancroft, Coon Rapids, Graettinger, Grundy Center, Laurens, Milford, New Hampton, Spencer, Sumner, Webster City, West Bend)

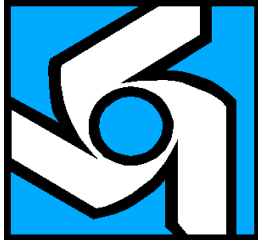
★ Stars represent municipal power utilities.

⊘ Asterisks represent Class D members.

⊘ Cooperatives that buy power from two districts are identified on the map with both colors, and by the number in their voting district.

Cooperatives in bold identify the Class C each director resides in.

BASIN ELECTRIC POWER COOPERATIVE



BASIN ELECTRIC POWER COOPERATIVE

A Touchstone Energy® Cooperative 



Basin Electric Power Cooperative is one of the largest electric generation and transmission cooperatives in the United States. Its core business is generating and transmitting wholesale bulk electric power primarily to its 138 member rural electric systems in nine states: Colorado, Iowa, Minnesota, Montana, Nebraska, New Mexico, North Dakota, South Dakota, and Wyoming. Its largest subsidiary, the for-profit Dakota Gasification Company, owns and operates the Great Plains Synfuels Plant near Beulah, ND, which gasifies lignite coal to produce natural gas, fertilizers, and other products.

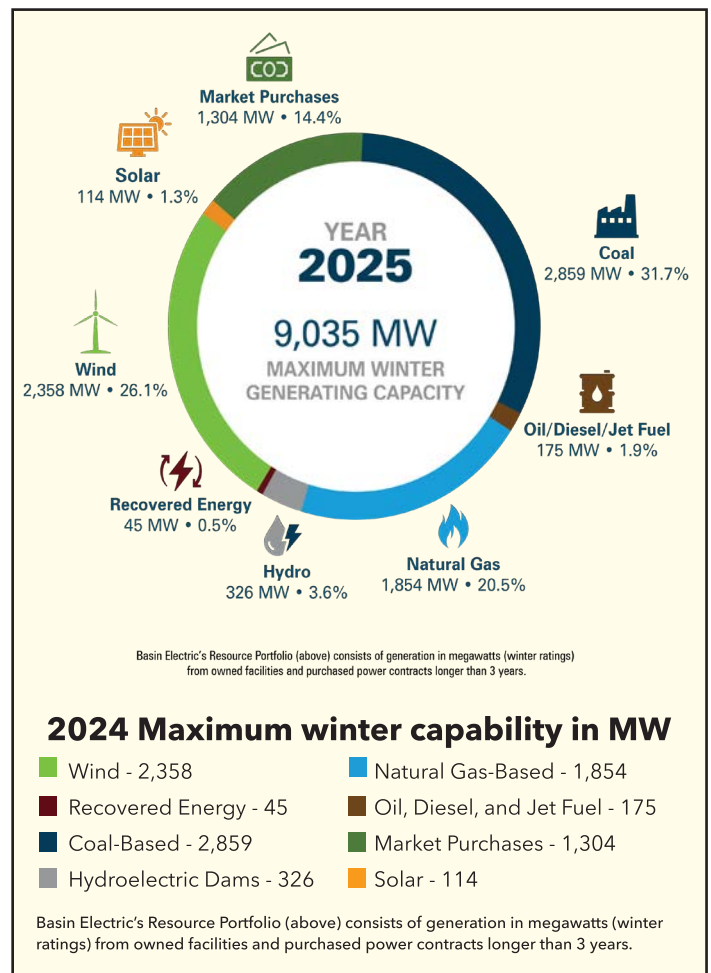
Three-tier system

Basin Electric is a generation and transmission cooperative with a three-tier delivery system. It sells wholesale power to our Class A members and others. The Class A members sell power to their distribution cooperatives (Basin Electric classifies distribution cooperatives as Class C members) who, in turn, sell power to retail customers.

At a glance

- A not-for-profit generation and transmission cooperative
- Consumer-owned by 138 member systems that serve 3 million consumers
- Parent company to seven subsidiaries, which together employ about 1,900 people

- Manages a resource portfolio of more than 9,035 megawatts of electric generation fueled by coal, renewables, natural gas, hydro power, oil, diesel, and jet fuel
- Owns and maintains more than 2,600 miles of high-voltage transmission



GREAT PLAINS SYNFUELS PLANT

DAKOTA GASIFICATION COMPANY



Basin Electric, through its for-profit subsidiary Dakota Gasification Company, owns and operates the Great Plains Synfuels Plant.

The Synfuels Plant is the only commercial-scale coal gasification plant in the country that manufactures natural gas using the Lurgi gasification technology. Located eight miles northwest of Beulah, North Dakota, the Synfuels Plant has been owned and operated by Dakota Gas since 1988. It is also the cleanest energy plant operating in the state of North Dakota, according to a comparison of emissions data available from the North Dakota Department of Health.

This plant began operating in 1984 at an original cost of \$2.1 billion. Using Lurgi gasifiers, the Synfuels Plant gasifies lignite coal to produce valuable products. The plant is capable of producing 13 products, many of which are marketed in the United States and worldwide.

Products produced at the Synfuels Plant include synthetic natural gas (SNG), ammonium sulfate, anhydrous ammonia, carbon dioxide, crude cresylic acid, krypton and xenon gases, liquid nitrogen, naphtha, phenol, tar oil, urea, diesel exhaust fluid, and beverage grade liquid carbon dioxide.

The average daily production of SNG is up to 170 million standard cubic feet, which is sent through the Northern Border pipeline to market. Dakota Gas has a strong commitment to the environment. The facility has improved its environmental footprint by achieving better reliabilities, improving efficiency, and meeting environmental goals. The Synfuels Plant continues to be in compliance with all state and federal laws.



DAKOTA GASIFICATION COMPANY

Basin Electric's Antelope Valley Station, a lignite-based electric generating station, is located adjacent to the Synfuels Plant. The two plants share resources such as fuel supply and site access along with water intake, delivery, and storage facilities. Water for the facilities comes from Lake Sakakawea, nine miles north of the energy site.

The Synfuels Plant consumes about 18,000 tons of lignite each day, which is supplied from the nearby Freedom Mine. The mine is owned and operated by The Coteau Properties Company, a subsidiary of the North American Coal Corporation.

Dakota Gas has one for-profit subsidiary, Souris Valley Pipeline, which delivers carbon dioxide to Canadian oil fields for enhanced oil recovery and sequestration.

THE COTEAU PROPERTIES COMPANY

FREEDOM MINE

DAKOTA COAL COMPANY

Basin Electric's subsidiary, Dakota Coal Company, controls rights to lignite reserves in North Dakota and provides financing for the Freedom Mine north of Beulah, North Dakota. Dakota Coal is also responsible for marketing Freedom Mine lignite production.

The Freedom Mine is owned and operated by The Coteau Properties Company, a subsidiary of the North American Coal Corporation, Dallas, Texas.

Dakota Coal and The Coteau Properties Company work closely with their customers to ensure lignite quality doesn't hamper daily plant operations. Customers know the quality of every shipment of lignite coal before they receive it. This information helps them handle their fuel to meet production and emissions goals.

The Freedom Mine delivers approximately 16 million tons of coal per year, making it the largest lignite mine in the United States in deliveries. The Freedom Mine uses three Bucyrus-Erie 2570 draglines for overburden removal and reclaims about 600 acres of land annually.

Dakota Coal's customers include Basin Electric's Antelope Valley Station, near Beulah, ND; the Leland Olds Station, near Stanton, ND; and Dakota Gasification Company's Great Plains Synfuels Plant, adjacent to Antelope Valley Station.

Dakota Coal also has a division, Wyoming Lime Producers, and a subsidiary, Montana Limestone Company.

Wyoming Lime Producers, a division of Dakota Coal Company, owns the Frannie Lime Plant, a lime manufacturing plant near Frannie, Wyoming. Pete Lien & Sons of Rapid City, South Dakota, operates the plant under a Lime Plant Marketing and Operating Agreement.



The Frannie Lime Plant converts limestone to high-quality lime through a heat transfer process called calcination.

The cooled lime is then crushed and screened to meet customer sizing requirements and loaded onto railcars or trucks for delivery to Basin Electric's coal-based energy facilities for use in stack emission scrubbers. The lime also has other regional industrial and environmental uses.

Since its inception in 1993, Wyoming Lime Producers has purchased limestone from a nearby quarry managed by Montana Limestone Company.

In 2002, Dakota Coal Company purchased Montana Limestone Company to have better control over the quality of limestone mined and delivered to the Frannie Lime Plant.

Lime quality has a direct relationship with limestone quality. All coal-based power plants that use a dry scrubber system are demanding higher-quality lime because of the more stringent environmental requirements.



ANTELOPE VALLEY STATION



Located near Beulah, North Dakota, Antelope Valley Station is one of Basin Electric's dispatchable generation facilities fueled by coal.

Antelope Valley Station's coal-based power plant has two units, each rated at 450 megawatts. It began commercial operation in 1984 and 1986, respectively.

Because of its location next to The Coteau Properties Company's Freedom Mine, from which it receives its fuel, Antelope Valley Station is referred to as a "mine-mouth" facility.



Tour participants get a peek into the 277' tall boiler at Antelope Valley Station.

Antelope Valley is located between the Synfuels Plant and the Freedom Mine. Basin Electric regularly hosts tours of these facilities for member system consumers, school groups, and more.

Antelope Valley was designed to be environmentally sound. Basin Electric consistently invests in environmental control technologies for all of its facilities.

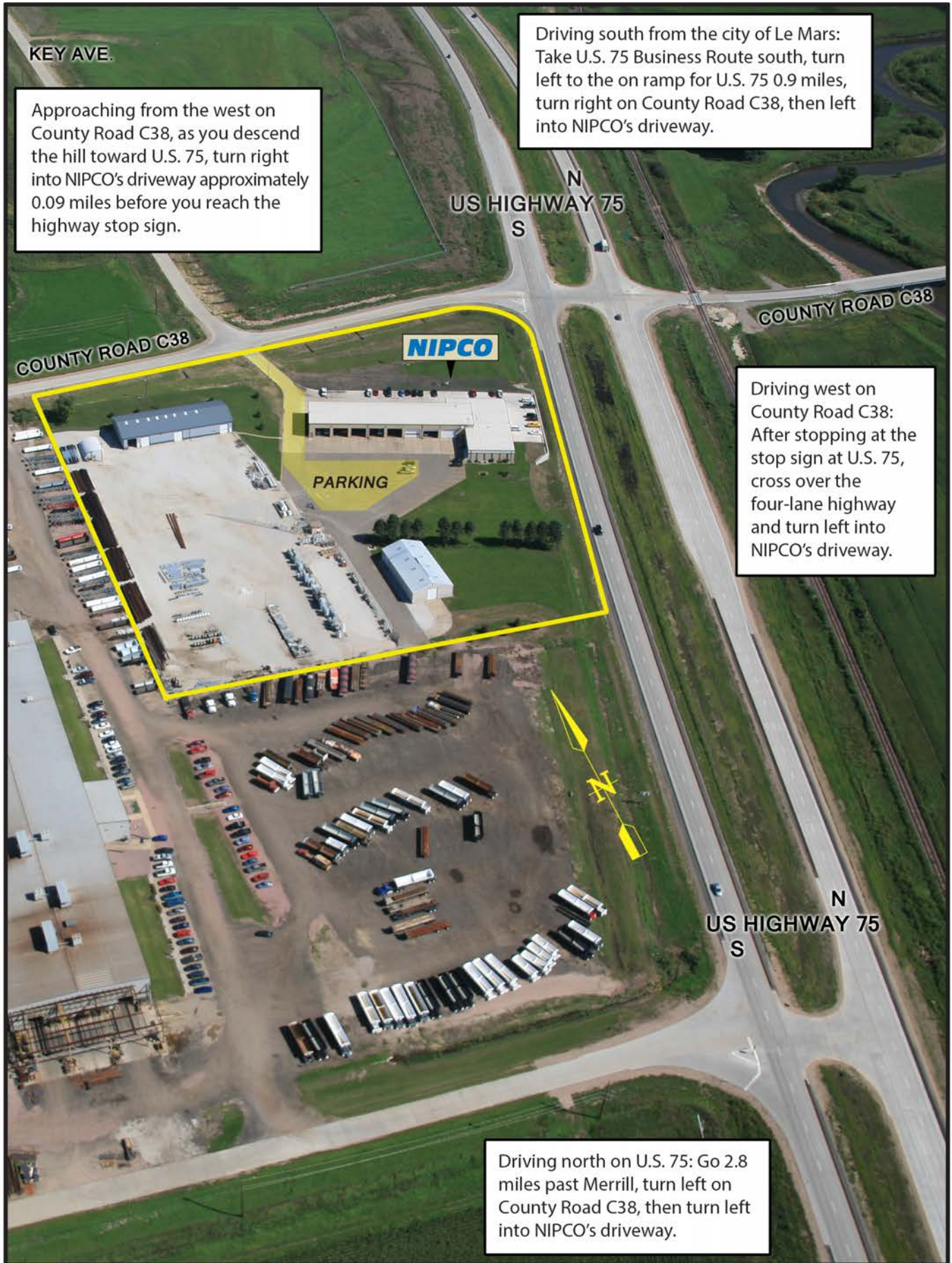
At Antelope Valley, dry scrubbers use lime to capture and remove up to 90 percent of sulfur dioxide emissions from stack gases.

Fabric filter bag houses capture and remove up to 99 percent of particulate matter. Each bag house contains more than 8,000 35-foot-tall bags.

Antelope Valley is a zero-discharge facility. Water is used efficiently. The only way water leaves the plant site is through evaporation.

Electricity from the Antelope Valley Station is delivered to member cooperatives via the high-voltage transmission system.

ARRIVING AT NIPCO



KEY AVE.

Approaching from the west on County Road C38, as you descend the hill toward U.S. 75, turn right into NIPCO's driveway approximately 0.09 miles before you reach the highway stop sign.

Driving south from the city of Le Mars: Take U.S. 75 Business Route south, turn left to the on ramp for U.S. 75 0.9 miles, turn right on County Road C38, then left into NIPCO's driveway.

Driving west on County Road C38: After stopping at the stop sign at U.S. 75, cross over the four-lane highway and turn left into NIPCO's driveway.

Driving north on U.S. 75: Go 2.8 miles past Merrill, turn left on County Road C38, then turn left into NIPCO's driveway.

Energy Trail Tour AGENDA

Wednesday

8:00 a.m.	Leave NIPCO
10:00 a.m.	Stretch break
NOON	Lunch at Upper Crust Pizza & Wings, Chamberlain, SD
1:45 p.m.	Tour Big Bend Dam & Powerhouse, Fort Thompson
5:15 p.m.	Supper at Drifters Bar & Grille, Fort Pierre
	<i>Lodging at Ramkota Hotel, Pierre, SD</i>

Thursday

5:30 a.m.	Continental breakfast at Ramkota Hotel, Pierre
6:00 a.m.	Leave Pierre
8:15 a.m.	Stretch break/"Cultural Enhancement Stop"
10:30 a.m.	Stretch break/drop off luggage at Holiday Inn, Bismarck
11:00 a.m.	Lunch to be served on the motorcoach
12:30 p.m.	Tour Antelope Valley Generating Station
2:00 p.m.	Tour Freedom Mine
6:00 p.m.	Supper and Gallery Tour at North Dakota Heritage Center, Bismarck, ND
	<i>Lodging at Holiday Inn Express, Bismarck</i>

Friday

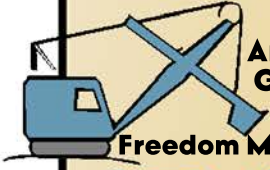
6:00 a.m.	Continental breakfast at Holiday Inn Express, Bismarck
6:30 a.m.	Leave Bismarck
8:45 a.m.	Stretch break
11:45 a.m.	Lunch at The Grainery, Watertown
12:45 p.m.	"Cultural Enhancement Stop"/Co-op photos <small>(weather permitting)</small>
2:00 p.m.	Depart Watertown
5:15 p.m.	Return to NIPCO

**BEVERAGES AND SNACKS WILL BE PROVIDED
THROUGHOUT THE TOUR!***

** Please indicate any food allergies/sensitivities when you RSVP so we may accommodate your needs.*

Energy Trail Tour

Day 1	
Day 2	
Day 3	



**Antelope Valley
Generating Station**

Freedom Mine

Beulah

Bismarck

**ND
Heritage**

Oriska

stretch break

Fargo



stretch break

NORTH DAKOTA

MINNESOTA

Watertown



**Cultural The Grainery
Enhancement**

Brookings

Pierre

*Drifters
BAR & GRILLE*



**Big Bend Dam
& Powerhouse
Fort Thompson**

**Upper Crust
Pizza & Wings**

Chamberlain



stretch break

Mitchell

Sioux Falls



SOUTH DAKOTA



Le Mars

NEBRASKA

IOWA



The
STATE LICENSE
Plate Game



 alAbAMA	 HAWAII	 MASSACHUSETTS	 NEW MEXICO	 SOUTH DAKOTA
 alaska	 IDAHO	 MICHIGAN	 NEW YORK	 TENNESSEE
 arIZONA	 ILLINOIS	 MINNESOTA	 NORTH CAROLINA	 TEXAS
 arKANSAS	 INDIANA	 MISSISSIPPI	 NORTH DAKOTA	 UTAH
 CALIFORNIA	 IOWA	 MISSOURI	 OHIO	 VERMONT
 COLORADO	 kANSAS	 MONTANA	 OKLAHOMA	 VIRGINIA
 CONNECTICUT	 KENTUCKY	 NEBRASKA	 OREGON	 WASHINGTON
 DeLAWARE	 LOUISIANA	 nevADA	 PENNSYLVANIA	 west VIRGINIA
 FLORIDA	 maINE	 NEW HAMPSHIRE	 RHODE ISLAND	 WISCONSIN
 geORGIA	 MAryLAND	 New JERSEY	 SOUTH CAROLINA	 WYOMING



Energy Trail Tour Emergency Contact Number

Angela Catton will have a cell phone on the bus: 712-301-8545



Northwest Iowa Power Cooperative
31002 County Road C38
Le Mars, IA 51031
712-546-4141
www.nipco.coop